

# FirmGuard<sup>®</sup> SecureSense

## DISPLAY KEY ENDPOINT SYSTEM DATA AND INFORMATION

### Introduction

SecureSense provides key data and information about each individual endpoint related to the system such as BitLocker status, part/serial numbers and more.

This information provides the building blocks for FirmGuard analysis of endpoint health, status, and security posture. In addition, SecureSense data powers the FirmGuard dashboard and reporting engine and when combined with other FirmGuard metrics provides an unprecedented platform to manage various aspects of the endpoint including BIOS firmware security.

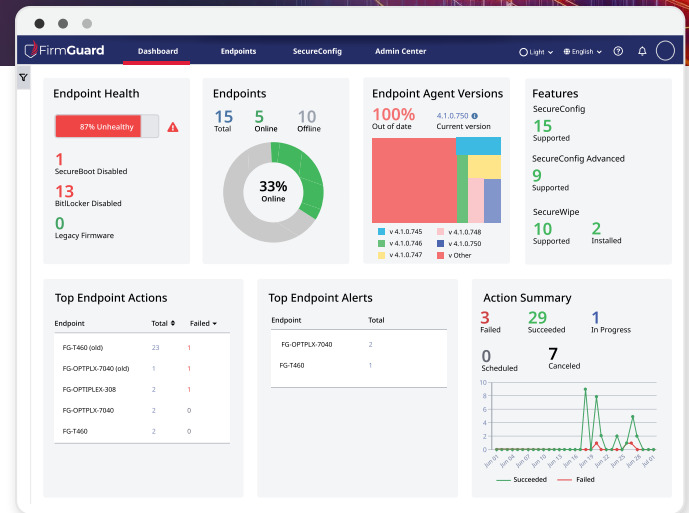
### Legacy Boot Mode Detection

SecureSense is one of many features within FirmGuard for BIOS firmware security (another is SecureCheck). One particularly important BIOS firmware related metric in SecureSense is "Legacy Boot Mode Detection."

**When the Windows operating system is installed on an endpoint there are two possible installation modes:**

1) UEFI mode or 2) Legacy mode.

UEFI mode is preferred because it is more modern and secure. In practice there is no reason for an endpoint to be in legacy



FirmGuard Dashboard

mode and SecureSense will immediately alert an administrator if the operating system is installed in "Legacy Boot" mode.

**The administrator should take immediate action to mitigate this situation. There are two ways to solve the problem:**

- 1) Reinstall Windows and make sure to put it into UEFI mode or
- 2) Retire the endpoint and replace it with a new machine.

The latter is sometimes necessary because older endpoints may not support UEFI mode.

SYSTEM		
Physical Disks		
Model	Size	Serial Number
HGST HTS545050A7E680	500.11 GB	RBF50AM532W5MP
KINGSTON SMS200S360G	60.02 GB	50026B7263061A3C
WDC WD5000BEKT-00KA9T0	500.11 GB	WD-WXM1AC0T1421

**Inventory Control:** SecureSense provides conventional system information about an endpoint that can sometimes be obtained from other sources as well, but one set of metrics that FirmGuard customers often find helpful are the individual part or serial numbers of memory and physical storage on the endpoint. This is particularly important if you are providing custom hardware to clients and want to ensure that original parts are still present in the endpoint.

SYSTEM		
Computer Name	Type	BitLocker Status
JAKUB-BACKUP-T4	Notebook	Disabled
Model	Serial	
	PBNLFEB	
Operating System	Version	Build
Microsoft Windows 10 Pro	22H2	19045
BIOS Vendor	Version	Build Date
Lenovo	G1ET41WW (1.16)	2012-05-25

**Note:** BitLocker Status is another key endpoint metric that administrators often monitor and report on. SecureSense tracks the status of BitLocker for each endpoint under management.